



walkinghotspot

The logo consists of a stylized 'w' made of dark blue geometric shapes. A green circle is positioned above the central vertical stroke of the 'w'. Below the 'w' is the text 'walkinghotspot' in a dark blue, lowercase, sans-serif font. The word 'walking' is in dark blue, 'hot' is in green, and 'spot' is in dark blue.

WINDOWS MOBILE 6 Premium Edition

Version 1.0

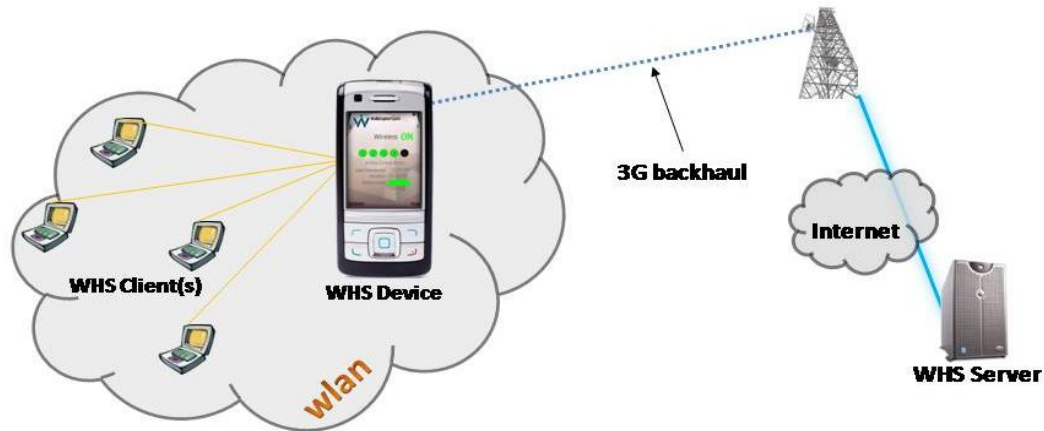
April 2008

Table of Contents

- 1.0 About the Application 3**
- 2.0 Downloading the Application 3**
- 3.0 Installing the Application 4**
- 4.0 Running the Application 5**
- 5.0 Settings..... 6**
 - 5.1 Network Settings 6
 - 5.1.1 WAN Access Point 6
 - 5.1.2 WiFi Access Point Name 7
 - 5.1.3 Password 7
 - 5.2 Power Management..... 8
 - 5.2.1 Cell Network Auto Shutdown..... 8
 - 5.2.2 Automatic Shutdown 8
 - 5.3 Client Auto Connect..... 9
 - 5.4 User Interface Skin..... 9
 - 5.5 Minimizing the Application 9
- 6.0 System Settings 10**
- 7.0 Status Screen 10**
- 7.0 Connecting a Client 11**
- 8.0 Roaming Indicator 12**
- 9.0 Help..... 12**
- 10.0 Exiting the Application..... 12**
- 11.0 Uninstalling and Upgrading the Application..... 12**

1.0 About the Application

The WalkingHotSpot™ (“WHS”) application transforms 3G / Wi-Fi™ smartphones into WLAN routers or hotspots by utilizing both radios simultaneously. The cellular radio is used as the network backhaul, while the Wi-Fi radio is used to create a WLAN culminating in a network connection for a laptop, MP3 player, or any other Wi-Fi enabled device that needs remote access to the Internet.



As seen in the picture above, the application can act as a hotspot for multiple devices depending on the service level for which the application is configured. There are currently two service levels (SL): Basic and Professional. In the Basic SL, the application is configured to work with only one WHS client. In the Professional SL, the application is configured to support up to a maximum of 5 WHS clients. Please note that using this application can have a significant impact on your mobile phone bill depending upon your current data rate plan. The WalkingHotSpot solution has been tested and works with at least the following Windows Mobile 6 phones: AT&T 8525 (HTC TyTN), AT&T Tilt 8925 (HTC TyTN II / HTC Kaiser), HTC Touch Cruise, and Sprint Mogul (HTC Mogul)

2.0 Downloading the Application

The Windows Mobile version of the WalkingHotSpot application is delivered as a Windows Mobile “cab” installation file and must be downloaded from the internet. Please consult your operator’s website or www.walkinghotspot.com for the appropriate link to the software.

3.0 Installing the Application

Installation of the WHS application begins automatically after the file has been downloaded, if the “Open file after download” option is checked as in Screen 1.



Screen 1



Screen 2

If not installing automatically, after the file download is complete navigate to the “My Documents” folder using File Explorer and click on “walkinghotspot.cab”.

Regardless of the installation method (automatic or manual) the first screen shown during the installation process will look similar to Screen 2 above. Select where the application should be installed based on the options given. The recommended location is “Device” but if there is not enough space choose “Storage Card” (if available and installed). Then click “Install” to continue.

As installation of the WalkingHotSpot application begins Screens 3 and 4 will appear. When the dialogue box in Screen 4 pops-up the installation is complete but phone (WHS device) must be restarted before continuing. Click “Yes” to reboot the phone.




Screen 3



Screen 4

NOTE: On some phones you might be asked to restart installation. If this happens, navigate back to the “My Documents” folder and click on “walkinghotspot.cab” again.

4.0 Running the Application

After successful installation click “Start” from the Today Screen, find and select the WalkingHotSpot icon  from the programs listed in the Today Screen (similar to Screen 5). At this point Screen 6 will appear which denotes the application is setting up the data connection to the carrier network (Wide Area Network). When the connection is made the WHS Idle Screen will appear as seen below. This indicates that the WHS application is ready to be started.



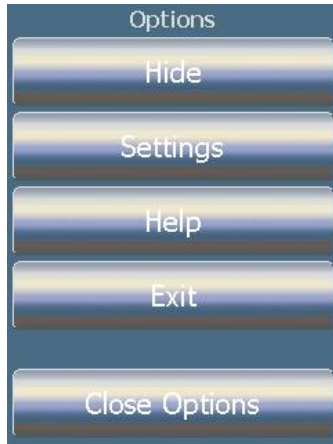
In order to begin using the WHS device (phone) as an access point, select the “**Start**” button on the WHS Idle screen. The WHS application is active and ready for connections when the status changes to a green “**ON**” as seen on the WHS Active Screen below. To terminate the WHS application, select “**Stop**” or select “**Options**” and then “**Exit**”.

TIP: To send the application to the background, select “**Options**” and then “**Hide**”. To bring the WHS Active Screen back into view, locate the WHS icon from the Today Screen and select it.



5.0 Settings

Before running the WHS application for the first time the system settings need to be configured. From the WHS Idle Screen touch the "Options" button on the screen or press the left menu button. The WHS Idle (or Active) Screen will slide up and the Options Screen will appear. Touch the "Settings" on screen button and the Main Settings Screen will appear.



Options Screen



Main Settings Screen

5.1 Network Settings

Touching the "Network" button on the Main Settings Screen will launch the Network Settings Screen (menu) as seen below.



Network Settings Screen

5.1.1 WAN Access Point

This is the only setting required to be set in order to Pressing the "WAN Access Point" button on the Network Settings Screen will toggle through the possible cellular connections available for the phone. This is the high speed connection from the mobile network operator that will be used for internet connectivity (backhaul). Please ensure that the proper selection is made. If there are any questions on which access point to use, contact your carrier.

NOTE: *This is the only setting that needs to be set in order to get the WHS application functional.*

5.1.2 Wi-Fi Access Point Name

Pressing the **“WiFi Access Point”** button on the Network Settings Screen will bring up a screen similar to Screen 7 below.



Screen 74

From this screen, the WHS access point's name can be changed. By default the WHS access point name is “WHS” + the last six(6) digits of the phone's electronic serial number. The default name will be shown; to change it, use the on screen keyboard to enter a new name.

5.1.3 Password

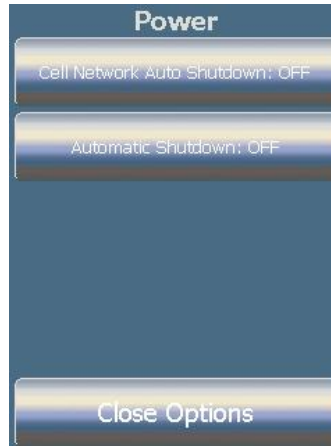
By default WEP encryption is not enabled on for the WHS application, meaning it is an open or unsecured network. To change the WEP key or password for your WalkingHotSpot touch the **“Password”** button on the Network Settings Screen. The WEP key or password must be either empty (blank), five(5) characters in length, or thirteen(13) characters in length. Enter the WEP key by utilizing the on-screen keyboard as shown in Screen 8 below.



Screen 8

5.2 Power Management

In the Pro service level, the power usage of the phone can be optimized when the WHS application is running. From the Main Settings Screen, touching the “Power” button brings up the Power Settings Menu.



Power Settings Screen

5.2.1 Cell Network Auto Shutdown

“Cell Network Auto Shutdown” values are “On” and “Off” as seen on the Power Settings Screen.

“On” – the mobile network data interface will shut down after the WHS application has been inactive (no client data transfer) for more than 3 minutes. This conserves battery life but requires a little time to reconnect when a WHS client re-initiates traffic but active connections may be broken.

NOTE: The interface will remain up if applications running on the WHS clients are using the interface. Some network clients send data across the network even in an idle state.

“Off” – (default value) no action taken, the mobile network data interface will stay persistent.

5.2.2 Automatic Shutdown

Values are “On” and “Off” as seen on the Power Settings Screen. To toggle the setting touch the “Automatic Shutdown” button on the “Power” Settings Screen.

“On” – (default value) WHS application will terminate when the battery drops below 20%.

“Off” – (default value) WHS application stay active until the battery dies.

5.3 Client Auto Connect

Values are “On” and “Off” as seen on Main Settings Screen. To toggle the setting, touch the “**Client Auto Connect**” on the Main Settings Screen.

“**On**” – (default value) WHS clients will automatically connect to the hotspot after their first successful connection. The WHS user will only have to authenticate them, via a popup message, on the initial connection.

“**Off**” – the WHS user will need to grant connection to the hotspot, via a popup message, each time a WHS client connects.

5.4 User Interface Skin

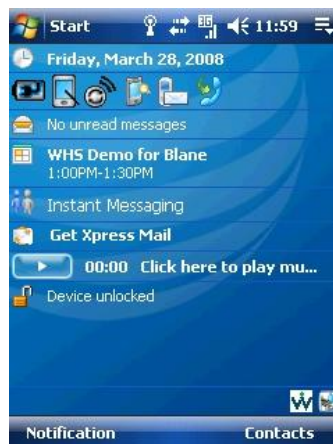
Touching the “**User Interface Skin**” button on the Main Settings Screen brings up Screen 9. Each button on the screen will change the color scheme to the corresponding theme.



Screen 9

5.5 Minimizing the Application

Clicking the “**Hide**” button on the Options Screen will minimize the WHS application as shown on Figure 10.



Screen 10

To return to the application, touch the WalkingHotSpot icon in the system tray, located in the lower right corner of the screen.

6.0 System Settings

To ensure reliable operation, you should deactivate power save features on your phone while running WalkingHotSpot.

1. Go to the phone's **"Start"** menu. Choose **"Settings"**
2. Click the **"System"** tab
3. Click **"Power"**
4. Click the **"Advanced"** tab
5. UNCHECK the boxes **"Turn off device if not used for"** for both **"Battery"** and **"External Power"**
6. Also, make sure the **"When device is turned on, do not charge the battery when connected to the PC"** is UNCHECKED
7. Click **"Ok"**

7.0 Status Screen

When the WHS application is active, the status screen displays details about what is happening. There are three display levels available: Low Detail, Medium Detail, and High Detail.



Switching between the different views is done by sliding the stylus or your finger from right to left or left to right across the middle of the touch screen.

The Low Detail view shows the number of potential and active connections while the Medium and High Detail views provide information on the application which includes real-time data on duration, battery level, and the amount of data transferred for a given session. The battery level indicator will change color based on the energy level: GREEN = good, YELLOW = moderate, and RED = low.

7.0 Connecting a Client

When the WHS application is active, one (1) or more WHS clients can connect to the internet depending upon the service level of the subscription. A maximum of five (5) WHS clients are currently supported. When a potential client is selecting the WalkingHotSpot to connect to, if it is the first connection or "Client auto connect" is set to "Off" the WHS user will be asked if the WHS client should be allowed to connect. Response is "Yes" or "No":

"Yes" – WHS client will connect to the WalkingHotSpot and one of the simulated LEDs (available slots for connectivity) will turn green as depicted in Screen 11 indicating an active connection was made.

"No" – Connectivity will not be granted.

Otherwise, if "Client auto connect" is set to "On" the WHS client will connect and a simulated LED will turn green as in Screen 11.



Screen 11

NOTE: WHS clients (laptops, MP3 players, cameras, etc.) are connected to the WalkingHotSpot just like any other Wi-Fi hot spot. Please consult your WHS client's documentation for details on how to connect it to a WLAN.

- The black circles represent the number of connections (IP addresses) available.
- The grey circles mean no connections can be made on that port.
- The green circles indicate the number of active connections (IP addresses) in use.

8.0 Roaming Indicator

When roaming outside the home carrier network, a pop up warning message will appear, alerting the user of potential increased data costs. Pressing “**Yes**” will keep the WHS application active while pressing “**Stop**” will terminate the WHS application.

NOTE: *The WHS application continues to run while the note is displayed. If the WHS application is attempting to start in a roaming network, a warning prompt will be issued to ensure the WHS application should be started.*

9.0 Help

Clicking the “**Help**” button on the Options Screen will launch the phone's browser and bring up a web site that contains help topics for the WHS application.

10.0 Exiting the Application

Clicking the “**Exit**” button on the Options Screen will terminate the WHS application.

NOTE: *Exiting the WHS application will stop all active connections, if any.*

11.0 Uninstalling and Upgrading the Application

To remove or uninstall the WHS application, press the Windows Mobile Start button and choose “Settings”, click the “System” tab and then click on “Remove Programs” and select WalkingHotSpot to remove the application. A reboot will be required to complete the uninstall process.

Upgrades to the WHS application are done via Over the Air (OTA). When a new version is released, a pop up message will be displayed at WHS application startup. Download the new application CAB file from the website and follow the previous installation instructions. The old version of the application will be removed automatically and replaced with the new application.